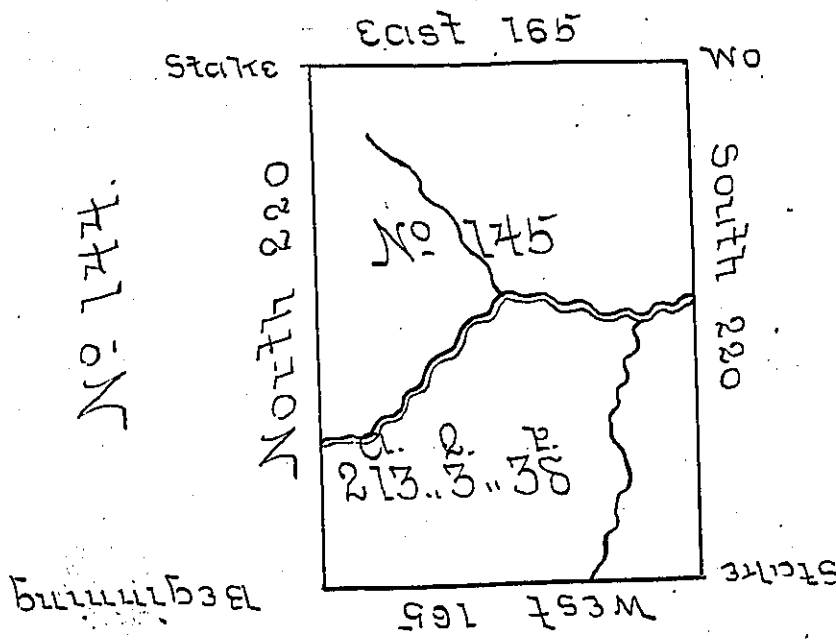


No 158

✓



The first surveyed part of
District No 2

The above is a Draught of a Survey made the first
 Day of June 1786 in Pursuance of Instructions of
 Instructions from the Surveyor General Situate
 on the Waters of Brush Creek on the West side of
 the Ohio River in District No 2 being Part of the
 Land to be Sold for the Redemption of the Deprecia-
 ted Certificates Containing Two hundred Thirteen
 Acres Three Quarters & Thirty eight Pole with
 Allowance of 6 P^{cs} 0^{cs}

Danl Best DS

To John Lukens Esq^r
 Surveyor Gen^l

IN TESTIMONY that the above is a copy of the original remaining on file in
 the Department of Internal Affairs of Pennsylvania, made
 conformably to an Act of Assembly approved the 16th day of
 February, 1833, I have hereunto set my Hand and caused
 the Seal of said Department to be affixed at Harrisburg,
 this twenty second day of December 1905.

Loae D Brown
 Secretary of Internal Affairs.